



TMR TUNNELINSPECTION

Transports de Martigny et Régions SA, Switzerland

Inspection of various rail tunnels on the following lines:

Saint-Bernard Express: Martigny to Orsières

Mont-Blanc Express: Martigny to Châtelard-Frontière.

The condition of the tunnels and galleries (type of lining, damages) is recorded and analyzed by means of a special software TunnelMap.

Inspection of various railway tunnels

Location

Transports de Martigny et Régions SA, Switzerland

Dates

Tunnels of Saint-Bernard Express Line May 2006
Tunnels and galleries of
Mont-Blanc Express Line April 2007

Project Description

The Saint-Bernard Express shows in some cases rack and pinion operated objects. The energy supply takes place through an aerial contact line, partly sideways through a contact rail. The tunnels were constructed at the beginning of the 20th century, the galleries between the forties and seventies.

Structure

Where the rock is not completely naked, the tunnels of both lines show different vault linings: brickwork, cast-in-place-concrete and shotcrete. The later shotcrete linings present drainages. The trackbed is placed directly on the rock invert.

Client and Contact Person

TMR, Transports de Martigny et Régions SA
Mr. B. Delasoie, Head of Technical Affairs
Mr. J.-P. Maye, Head of the Infrastructure Dept.

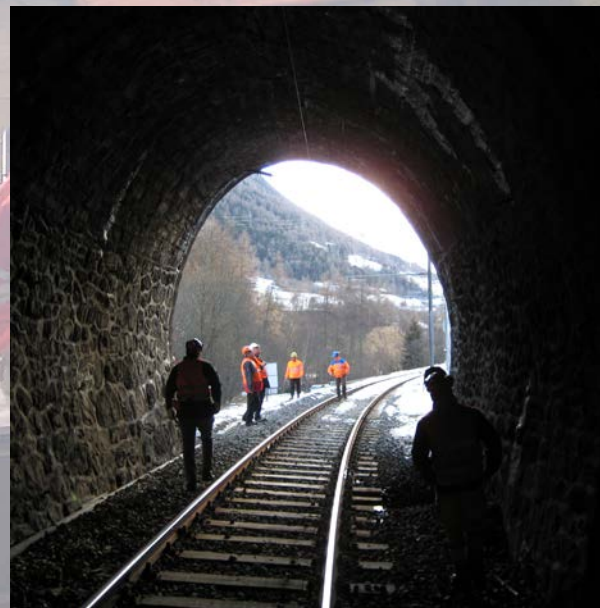


Object

Standard gauge: Six single-track tunnels with a total length of 601 m.
Narrow gauge: 14 tunnels und 18 galleries with a total length of 3'170 m.

Our Services

- Scanning of all tunnels and galleries, analysis and evaluation of the structural clearance
- Execution of an initial inspection with TunnelMap and presentation in CAD
- State assessment and classification of the inspected structures
- Strategy for the conservation of value including suggestion of measures and prioritization



Amberg Engineering AG
Trockenloostrasse 21
CH-8105 Regensdorf-Watt

information@amberg.ch, www.amberg.ch